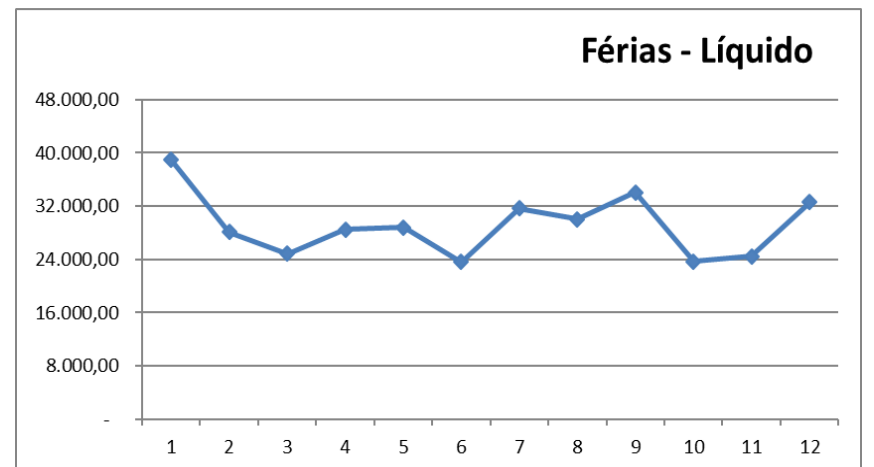
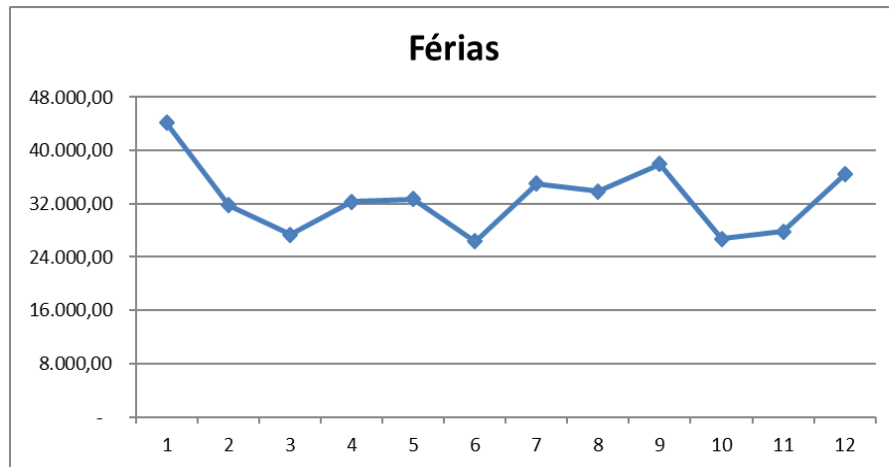
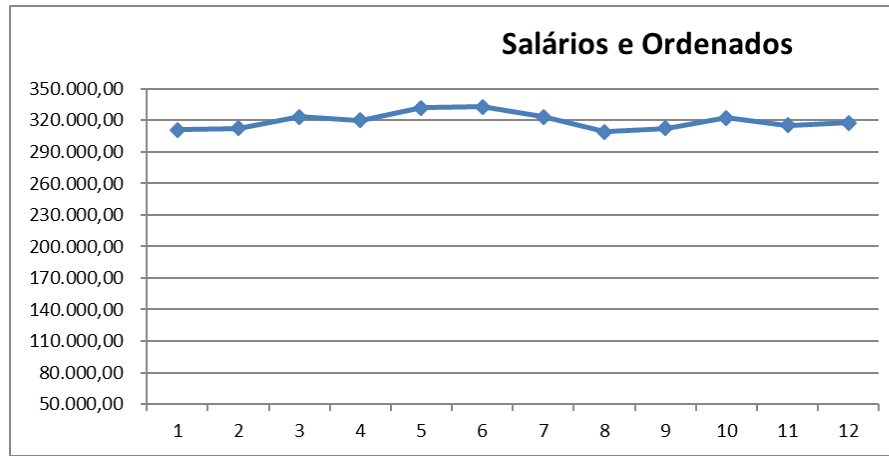


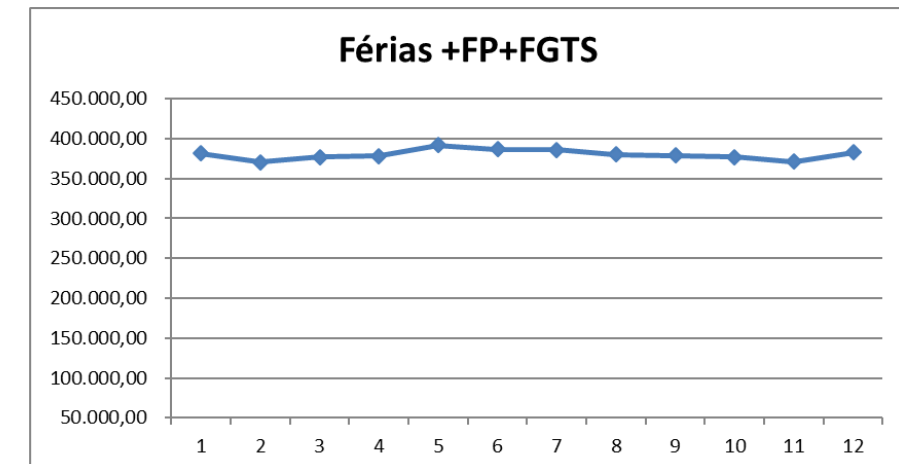
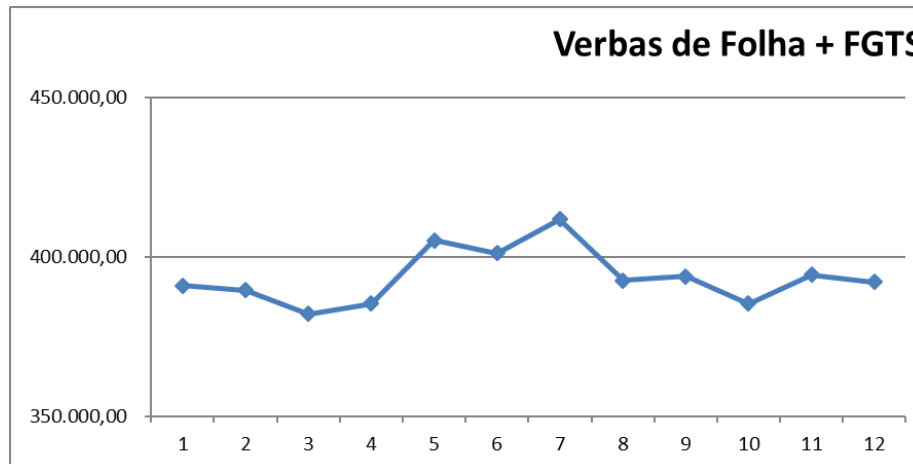
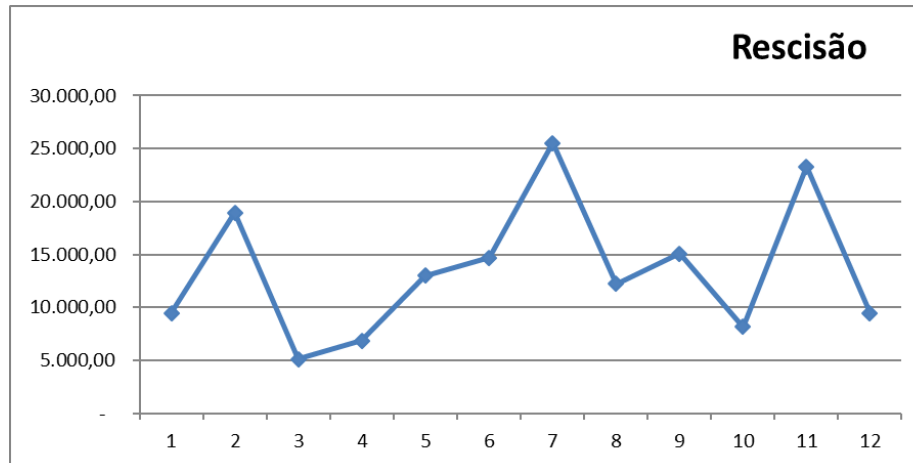
Folha de Pagamento:

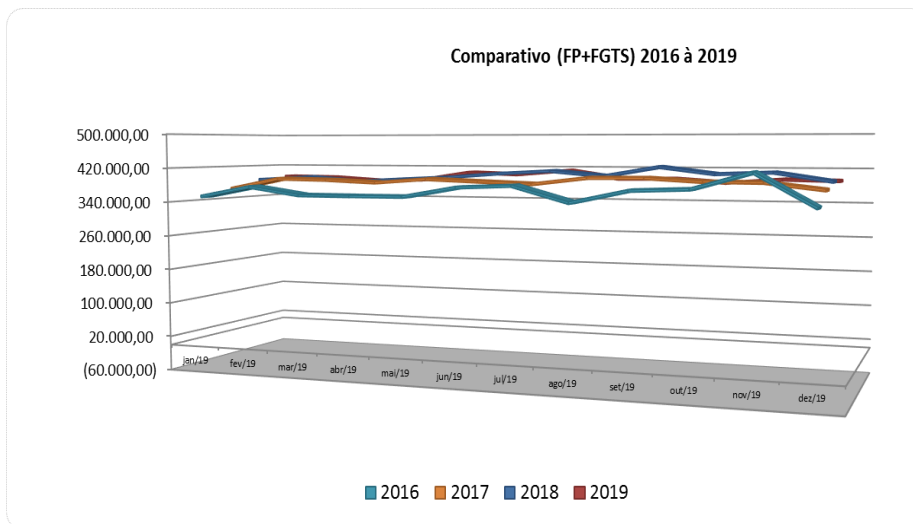
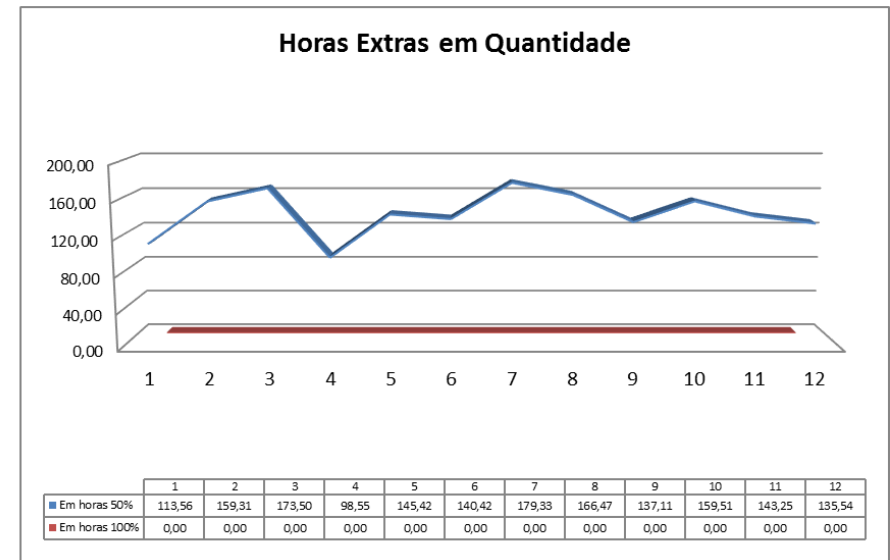
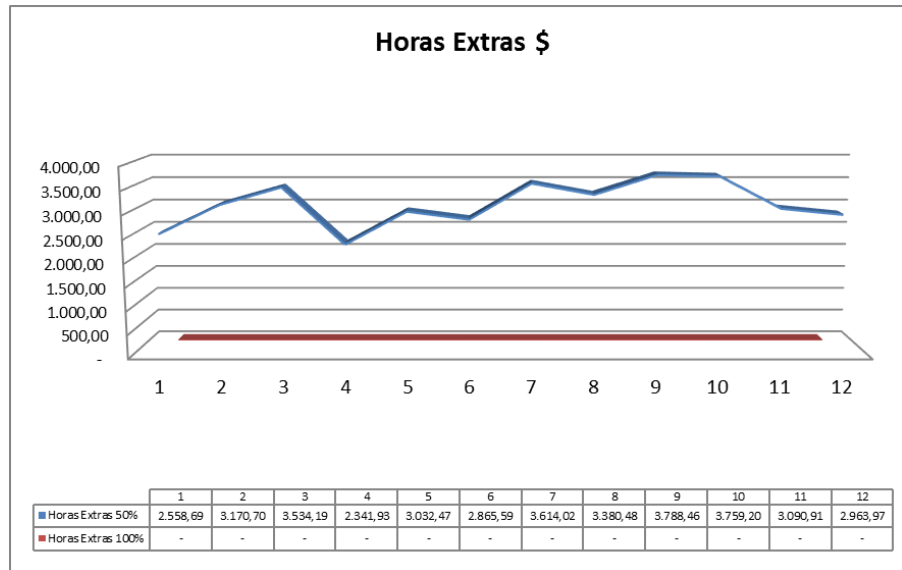
	jan/19	fev/19	mar/19	abr/19	mai/19	jun/19	jul/19	ago/19	set/19	out/19	nov/19	dez/19	TOTAL	12	Médias
<b>FÉRIAS</b>															
PROVENTOS	44.130,15	31.798,97	27.321,97	32.283,09	32.731,45	26.387,22	35.049,23	33.894,18	37.924,47	26.720,88	27.785,85	36.395,31	<b>392.422,77</b>		<b>32.701,90</b>
DESCONTOS	(5.216,60)	(3.668,80)	(2.485,18)	(3.768,96)	(3.908,08)	(2.740,29)	(3.400,55)	(3.840,63)	(3.870,92)	(3.001,95)	(3.347,79)	(3.822,66)			
LÍQUIDO	38.913,55	28.130,17	24.836,79	28.514,13	28.823,37	23.646,93	31.648,68	30.053,55	34.053,55	23.718,93	24.438,06	32.572,65	349.350,36		29.112,53
<b>FOLHA PAGTO.</b>															
PROVENTOS	311.052,00	312.590,63	323.227,03	319.849,42	331.909,08	332.771,04	323.423,30	309.063,46	312.627,85	322.452,02	315.372,26	317.755,79	<b>3.832.093,88</b>		<b>319.341,16</b>
DESCONTOS	(113.619,87)	(111.382,29)	(117.402,25)	(117.953,08)	(120.006,55)	(120.143,32)	(123.526,95)	(103.573,31)	(103.490,29)	(106.432,44)	(104.830,21)	(104.158,26)			
LÍQUIDO	197.432,13	201.208,34	205.824,78	201.896,34	211.902,53	212.627,72	199.896,35	205.490,15	209.137,56	216.019,58	210.542,05	213.597,53	2.485.575,06		207.131,26
<b>RESCISÃO</b>															
PROVENTOS	9.484,40	18.923,09	5.103,09	6.866,79	12.998,37	14.676,06	25.513,98	12.201,23	15.086,50	8.178,57	23.280,21	9.470,42	<b>161.782,71</b>		<b>13.481,89</b>
DESCONTOS	(3.273,21)	(3.769,65)	(2.410,71)	(3.683,18)	(3.774,19)	(7.017,39)	(11.295,69)	(3.475,03)	(4.782,19)	(6.019,46)	(5.118,57)	(5.859,43)			
LÍQUIDO	6.211,19	15.153,44	2.692,38	3.183,61	9.224,18	7.658,67	14.218,29	8.726,20	10.304,31	2.159,11	18.161,64	3.610,99	101.304,01		8.442,00
<b>SOMA</b>															
PROVENTOS	364.666,55	363.312,69	355.652,09	358.999,30	377.638,90	373.834,32	383.986,51	355.158,87	365.638,82	357.351,47	366.438,32	363.621,52	<b>4.386.299,36</b>		<b>365.524,95</b>
DESCONTOS	(122.109,68)	(118.820,74)	(122.298,14)	(125.405,22)	(127.688,82)	(129.901,00)	(138.223,19)	(110.888,97)	(112.143,40)	(115.453,85)	(113.296,57)	(113.840,35)			
LÍQUIDO	242.556,87	244.491,95	233.353,95	233.594,08	249.950,08	243.933,32	245.763,32	244.269,90	253.495,42	241.897,62	253.141,75	249.781,17	2.936.229,43		244.685,79
FGTS	26.231,74	26.231,74	26.372,47	26.375,66	27.461,98	27.325,01	27.720,87	37.376,05	28.132,39	27.925,70	27.842,69	28.516,88	337.513,18		28.126,10
Prov + FGTS	390.898,29	389.544,43	382.024,56	385.374,96	405.100,88	401.159,33	411.707,38	392.534,92	393.771,21	385.277,17	394.281,01	392.138,40	4.723.812,54		<b>393.651,05</b> 98,21%
Férias +FP+FGTS	381.413,89	370.621,34	376.921,47	378.508,17	392.102,51	386.483,27	386.193,40	380.333,69	378.684,71	377.098,60	371.000,80	382.667,98	4.562.029,83		<b>380.169,15</b> 97,80%

Isenção Pis	3.646,67	3.633,13	3.556,52	3.589,99	3.776,39	3.738,34	3.839,87	3.551,59	3.656,39	3.573,51	3.664,38	3.636,22	43.862,99
Gratificação Função	3.049,70	2.266,10	2.266,10	2.749,70	1.300,00	1.300,00	300,00	300,00	300,00	300,00	300,00	300,00	14.731,60
Adic. Por Acumulo de Função	-	-	-	-	1.339,15	2.749,70	2.749,70	2.736,89	2.749,70	2.749,70	2.749,70	2.749,70	20.574,24
Ajuda de Custo até 50%	1.010,00	1.410,00	1.010,00	1.010,00	1.010,00	1.010,00	1.010,00	1.010,00	1.010,00	1.010,00	1.010,00	1.040,00	12.550,00
Horas Extras 50%	2.146,54	2.718,02	2.850,61	1.920,83	2.544,32	2.292,52	3.149,58	2.966,99	3.030,97	3.031,64	2.472,92	2.372,88	31.497,82
Reflexo DSR	412,15	452,68	683,58	421,10	488,15	573,07	464,44	413,49	757,49	727,56	617,99	591,09	6.602,79
Subtotal	2.558,69	3.170,70	3.534,19	2.341,93	3.032,47	2.865,59	3.614,02	3.380,48	3.788,46	3.759,20	3.090,91	2.963,97	38.100,61
Horas Extras 100%	-	-	-	-	-	-	-	-	-	-	-	-	-
Reflexo DSR	-	-	-	-	-	-	-	-	-	-	-	-	-
Subtotal	-	-	-	-	-	-	-	-	-	-	-	-	-
<b>Total</b>	<b>2.558,69</b>	<b>3.170,70</b>	<b>3.534,19</b>	<b>2.341,93</b>	<b>3.032,47</b>	<b>2.865,59</b>	<b>3.614,02</b>	<b>3.380,48</b>	<b>3.788,46</b>	<b>3.759,20</b>	<b>3.090,91</b>	<b>2.963,97</b>	<b>38.100,61</b>
%	0,67%	0,86%	0,94%	0,62%	0,77%	0,74%	0,94%	0,89%	1,00%	1,00%	0,83%	0,77%	0,84%
Em horas 50%	113,56	159,31	173,50	98,55	145,42	140,42	179,33	166,47	137,11	159,51	143,25	135,54	1.751,97
Em horas 100%	0,00	0,00	0,00	0,00	0,00	0,00	0,00	0,00	0,00	0,00	0,00	0,00	-
<b>Total</b>	<b>113,56</b>	<b>159,31</b>	<b>173,50</b>	<b>98,55</b>	<b>145,42</b>	<b>140,42</b>	<b>179,33</b>	<b>166,47</b>	<b>137,11</b>	<b>159,51</b>	<b>143,25</b>	<b>135,54</b>	<b>1.751,97</b>

	jan/19	fev/19	mar/19	abr/19	mai/19	jun/19	jul/19	ago/19	set/19	out/19	nov/19	dez/19	Total	Red/Aum
Empregados	184	182	183	186	189	187	187	189	192	196	195	193		
Afastados														
Demitidos	3	5	3	3	4	4	5	3	2	5	5	3	45	22,96%
Admitidos	1	6	6	6	2	4	7	6	6	4	3	6	57	29,08%
Ativos	182	183	186	189	187	187	189	192	196	195	193	196		







	2016	2017	2018	2019	%
Colaboradores	179	189	184	196	
LÍQUIDO	238.617,41	244.001,15	246.591,46	244.685,79	102,54%
FGTS	25.329,71	27.248,05	27.611,78	28.126,10	111,04%
<b>Prov + FGTS</b>	<b>370.824,21</b>	<b>389.861,17</b>	<b>400.824,99</b>	<b>393.651,05</b>	<b>106,16%</b>
Férias +FP+FGTS	352.140,07	372.256,98	388.706,61	380.169,15	107,96%